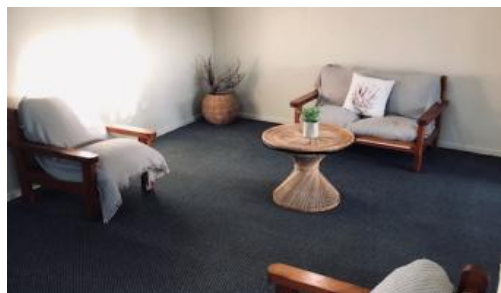


Sold

## 165 New Farm Road, Norfolk Island



### A perfect House & Land Package

With over 1.5 ha of beautiful land in a sought after location, this property is bursting with opportunities! The block is large enough for dual occupancy\* and the 3 bedroom home could become an investment with great rental returns, financing a dream home at the other end of the block with stunning ocean and valley views.

Create an oasis of sustainable living using the 2 bores, multiple sheds, new water tank - and there is already an established and nicely maintained orchard, which provides not only great fruit but also a lovely separation between the existing home and anything the new owner might choose to do with the sea view section. This property is ideal for the kind of sustainable lifestyle many seek on Norfolk Island.

The 3 bedroom home has recently received a modern face lift with a new roof and light and bright new paint work inside and out. The home is very livable, over 2 storeys and with a nice undercover outdoor space for enjoying the beautiful location. Live in this while you create your own home, and then rent it out easily for a steady income.

Inspect this delightful property and see the opportunities to own a perfect slice of this beautiful island.

\*dual occupancy is subject to council planning approval

3 bedrooms 1 bathroom 3 car spaces 1.54 ha

<b>Price</b>	SOLD
<b>Property Type</b>	Residential
<b>Property ID</b>	194
<b>Land Area</b>	1.54 ha

### Agent Details

Rose Evans - 0011 6723 22429

### Office Details

Norfolk Island Real Estate  
76 Taylors Road Norfolk Island, NSW,  
2899 Australia  
0011 6723 22429



Norfolk Island  
Real Estate  
*hettai home*

The above information provided has been furnished to us by the vendor/s. We have not verified whether or not that information is accurate and do not have any belief in one way or the other in its accuracy. We do not accept any

responsibility to any person for its accuracy and do no more than pass it on. All interested parties should make and rely upon their own inquiries in order to determine whether or not this information is in fact accurate.