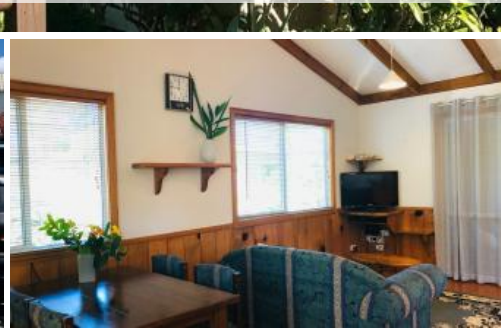


Sold



10 Pitcairn Place, Norfolk Island



Quiet Cul-De-Sac Living in a Modern and Tidy Home

Located on peaceful Pitcairn Place, this single-level cottage offers a quiet sanctuary in a neat cul-de-sac, yet is just a 10-minute stroll to Burnt Pine.

On a tidy 667m² block, the house is set back from the road, offering additional privacy in an already private area. The back yard is nly slightly sloped and offers great options for dabbling in raised vege gardens or flower beds.

Inside the home there are 2 double sized bedrooms with built in robes. Each of these bedrooms opens out to a north/west facing deck space overlooking the yard. These bedrooms are generously away from the living rooms by a T-shaped hallway, allowing the goings on of living and dining to be separated from sleeping quarters.

An open plan pine kitchen, living room and dining area feature high cathedral ceilings, bringing space and light to the area. Immediately off the lounge zone is a closed in veranda repurposed as a study or third bedroom.

- 8,000 gallon water tank
- Instantaneous gas hot water system
- Laundry / second bathroom with bath downstairs
- timber dado boards
- High ceilings in living rooms
- Convenient location to town, school and beach

 3  1  1  667 m²

Price	SOLD
Property Type	Residential
Property ID	347
Land Area	667 m ²

Agent Details

Rose Evans - 0011 6723 22429

Office Details

Norfolk Island Real Estate
76 Taylors Road Norfolk Island, NSW,
2899 Australia
0011 6723 22429



- Ideal easy living in a modern home

Consider this home as a great entry level property, downsizer or even an investment opportunity - its fits the bill perfectly!

The above information provided has been furnished to us by the vendor/s. We have not verified whether or not that information is accurate and do not have any belief in one way or the other in its accuracy. We do not accept any responsibility to any person for its accuracy and do no more than pass it on. All interested parties should make and rely upon their own inquiries in order to determine whether or not this information is in fact accurate.