



### 8f1 Buffetts Road, Norfolk Island



### Tranquil Location Ideal for Building Your Dream Home

Make your dream of building that perfect home in a rural location a reality. Just five minutes from the town centre is this partially cleared, flat portion of 9912m2 (approximately 2.4 acres) fully fenced land. This peaceful acreage located in the Steeles Point / Two Chimneys area would suit a hobby farmer or those seeking a quiet tranquil retreat.

The portion is accessed from Buffetts Road via a gate and along a battle-axe private driveway. With a native forest and other well-established trees surrounding the cleared section, the land comes with an established privacy screening and protection from strong winds already in place.

~~~~~

If you are uncertain what to build on the land, Lockwood Homes offer a range of standard and custom designed homes perfectly suited to Norfolk Island.

The PEKAPEKA HOUSE is a three-bedroom, 152m<sup>2</sup> home designed for comfortable family living or as a relaxed family holiday home. The open plan kitchen, living and dining area, two of the three bedrooms, and the snug all open out onto a large deck with built-in seating, while the third bedroom also has separate access to the outdoors.



The intersecting gable rooflines create an impressive ceiling inside the home,

9,912m<sup>2</sup>

|                      |                      |
|----------------------|----------------------|
| <b>Price</b>         | SOLD for \$240,000   |
| <b>Property Type</b> | Residential          |
| <b>Property ID</b>   | 655                  |
| <b>Land Area</b>     | 9,912 m <sup>2</sup> |

### Agent Details

Rose Evans - 0011 6723 22429

### Office Details

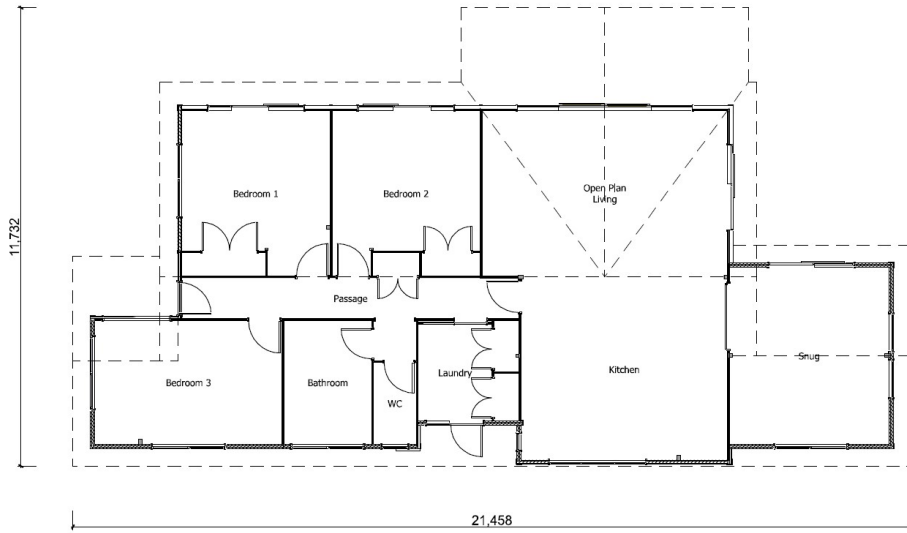
Norfolk Island Real Estate  
76 Taylors Road Norfolk Island, NSW,  
2899 Australia  
0011 6723 22429



with connected interior beams drawing the eye to the gable end windows in both the open plan living area and snug, which may be separated by a stylish barn door.

This home is completely customisable to suit your needs and your budget with prices starting from AU\$616,400.

View more at [lockwood.co.nz](http://lockwood.co.nz) or talk to your Norfolk Island Real Estate agent for further information.



The above information provided has been furnished to us by the vendor/s. We have not verified whether or not that information is accurate and do not have any belief in one way or the other in its accuracy. We do not accept any responsibility to any person for its accuracy and do no more than pass it on. All interested parties should make and rely upon their own inquiries in order to determine whether or not this information is in fact accurate.