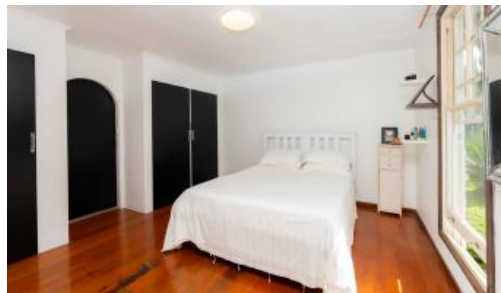




8 Adams Road, Norfolk Island



Spacious Family Home in a Peaceful, Convenient Location

Perfectly positioned for family life, this beautifully maintained three-bedroom, two-bathroom residence sits proudly on a generous 2,466m² block, just a short stroll from the local school. Combining charm, character, and functionality, it offers the ideal blend of comfort and convenience.

Step inside and you'll be welcomed by a light-filled home that has been thoughtfully designed for easy living. The heart of the home features a spacious open-plan kitchen and dining area, seamlessly flowing into a vast living room where a striking open fireplace creates the perfect setting for cosy family evenings. Polished timber floors run throughout, while character details - including leadlight windows, feature doors, and a bold peacock wallpaper wall - add individuality and warmth. Norfolk pine benchtops and timber shelving bring a touch of island flair to the interiors.

The king-sized master suite, complete with a huge walk-in wardrobe and ensuite, is privately positioned on one side of the home. On the opposite wing, two generously sized bedrooms share a practical Jack & Jill bathroom - an ideal layout for children or guests, ensuring space and privacy for everyone.

Outdoors, a large timber deck invites you to relax and take in the peaceful surrounds. The gently terraced backyard provides a secure play space for children, while also offering scope for a flourishing vegetable garden. A double carport, small garden shed, and a reliable bore water supply add to the property's practicality.

Property Highlights:

3 2 2 2,466 m²

Price	\$750,000
Property Type	Residential
Property ID	857
Land Area	2,466 m ²
Floor Area	320 m ²

Agent Details

Rose Evans - 0011 6723 22429

Office Details

Norfolk Island Real Estate
76 Taylors Road Norfolk Island, NSW,
2899 Australia
0011 6723 22429



- 3 well-sized bedrooms, 2 bathrooms
- Expansive living room with open fireplace
- Large open-plan kitchen and dining space
- Polished timber floors and charming character details
- Spacious master suite with walk-in wardrobe and ensuite
- Large timber deck overlooking tiered, usable land
- Double carport, shed, and bore water supply
- Quiet, family-friendly location within walking distance of school

This inviting home offers more than just space and comfort - it delivers a lifestyle. With its family-friendly layout, private setting, and unbeatable proximity to the school, it presents an excellent opportunity to create lasting memories in a home with both character and potential.

The above information provided has been furnished to us by the vendor/s. We have not verified whether or not that information is accurate and do not have any belief in one way or the other in its accuracy. We do not accept any responsibility to any person for its accuracy and do no more than pass it on. All interested parties should make and rely upon their own inquiries in order to determine whether or not this information is in fact accurate.